

Highly Efficient and Reliable

Power Protection and Backup

smartzone™ UPS

## UPS Pocket Guide

NORTH AMERICA AND INTERNATIONAL

For more information and support visit  
[www.panduit.com/ups](http://www.panduit.com/ups)

**PANDUIT™**  
infrastructure for a connected world

# Welcome to Panduit's SmartZone™ UPS and Accessories



## Product Families

**1-3 kVA Double Conversion VRLA**

**1-3 kVA Double Conversion Lithium Ion**

**1-3 kVA Line Interactive Lithium Ion**

**5-10 kVA Double Conversion 1-Phase VRLA**

**10/15/20 kVA Double Conversion 3-Phase VRLA**

**Intelligent Network Management Card**

**Environmental and Security Sensors**

**External Battery Pack**

# 1-3 kVA UPS

**Colorful Rotatable  
Display**



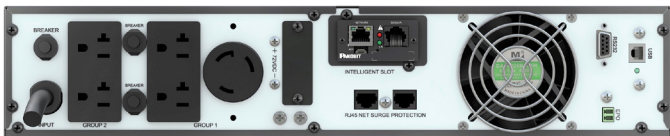
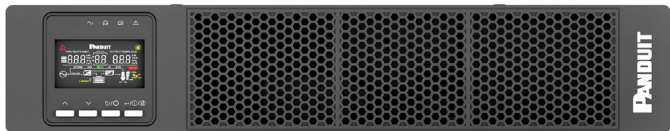
**High  
Efficiency  
ECO Mode**

**Wide Input  
Range**

**Double Conversion  
Pure Sinewave**

**Output Unity  
Power Factor**

**Comprehensive  
Power Protection**



**Lithium Ion:  
5x Energy Density  
in 1/3 Space,  
3x Lifespan and Faster  
Charging than VRLA**

**Intelligent Battery  
Management**

**Programmable Outlets  
with Smart Load-Shed**

**Intelligent Fan  
Speed Control**

**Hot-Swappable &  
Expandable Battery**

**Intelligent Network  
Management Card**

**SmartZone™ Cloud Ready  
with Quick Connect**

# 5-20 kVA UPS

**Colorful Touchscreen  
Display**



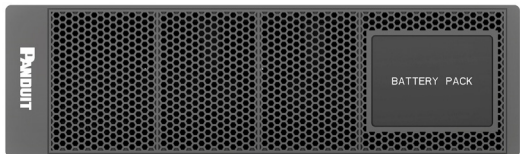
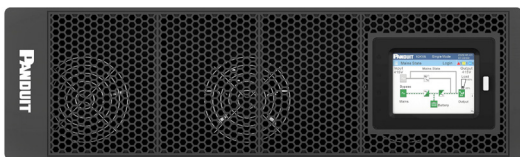
**High  
Efficiency  
ECO Mode**

**Wide Input  
Range**

**Double Conversion  
Pure Sinewave**

**Output Unity  
Power Factor**

**Comprehensive  
Power Protection**



**Single Phase & 3-Phase  
Configurations**

**Intelligent Battery  
Management**

**Programmable Outlets  
with Smart Load-Shed**

**Outlets & Terminal  
Block Configurations**

**Intelligent Fan  
Speed Control**

**Hot-Swappable &  
Expandable Battery**

**Intelligent Network  
Management Card**

**SmartZone™ DCIM Ready  
with Quick Connect**

NORTH AMERICA  
1-3 kVA UPS

Panduit SKU	Region Compliance	kVA	UPS Topology	Form Factor
U01S13V	NA/LAT	1	Double Conversion	2U
U01S11V	NA/LAT	1	Double Conversion	2U
U02S11V	NA/LAT	2	Double Conversion	2U
U03S11V	NA/LAT	3	Double Conversion	2U
U01S11L	NA/LAT	1	Line Interactive	2U
U02S11L	NA/LAT	1.5	Line Interactive	2U
U03S11L	NA/LAT	3	Line Interactive	2U
U01N13V	NA/LAT	1	Double Conversion	2U
U01N11V	NA/LAT	1	Double Conversion	2U
U02N11V	NA/LAT	2	Double Conversion	2U
U03N11V	NA/LAT	3	Double Conversion	2U
U01N11L	NA/LAT	1	Line Interactive	2U
U02N11L	NA/LAT	1.5	Line Interactive	2U
U03N11L	NA/LAT	3	Line Interactive	2U

Battery Type	Full-Load Run Time (min)	Nominal Input Voltage	Nominal Output Voltage	Outlets
VRLA	2.7	110V/120V	110V/120V	(6)5-15R
VRLA	6	110V/120V	110V/120V	(6)5-15R
VRLA	2.9	110V/120V	110V/120V	(6)5-20R
VRLA	3.4	110V/120V	110V/120V	(4)5-20R + (1)L5-30R
Lithium-Ion	9	110V/120V	110V/120V	(6)5-15R
Lithium-Ion	7.5	110V/120V	110V/120V	(6)5-15R
Lithium-Ion	9	110V/120V	110V/120V	(4)5-20R + (1)L5-30R
VRLA	2.7	110V/120V	110V/120V	(6)5-15R
VRLA	6	110V/120V	110V/120V	(6)5-15R
VRLA	2.9	110V/120V	110V/120V	(6)5-20R
VRLA	3.4	110V/120V	110V/120V	(4)5-20R + (1)L5-30R
Lithium-Ion	9	110V/120V	110V/120V	(6)5-15R
Lithium-Ion	7.5	110V/120V	110V/120V	(6)5-15R
Lithium-Ion	9	110V/120V	110V/120V	(4)5-20R + (1)L5-30R

NORTH AMERICA  
**5-10 kVA UPS**

<b>Panduit SKU</b>	<b>Region Compliance</b>	<b>kVA</b>	<b>UPS Topology</b>	<b>Form Factor</b>
U05S11V	NA/LAT	5	Double Conversion	6U
U06S11V	NA/LAT	6	Double Conversion	6U
U10S11V	NA/LAT	10	Double Conversion	6U
U05N11V	NA/LAT	5	Double Conversion	6U
U06N11V	NA/LAT	6	Double Conversion	6U
U10N11V	NA/LAT	10	Double Conversion	6U



Battery Type	Full-Load Run Time (min)	Nominal Input Voltage	Nominal Output Voltage	Outlets
VRLA	14.5	208V/240V	208V/240V	(2)L6-30R + (2)L6-30R
VRLA	9.7	208V/240V	208V/240V	(2)L6-30R + HW
VRLA	4.5	208V/240V	208V/240V	(2)L6-30R + HW
VRLA	14.5	208V/240V	208V/240V	(2)L6-30R + (2)L6-30R
VRLA	9.7	208V/240V	208V/240V	(2)L6-30R + HW
VRLA	4.5	208V/240V	208V/240V	(2)L6-30R + HW



**INTERNATIONAL  
1-3 kVA UPS**

<b>Panduit SKU</b>	<b>Region Compliance</b>	<b>kVA</b>	<b>UPS Topology</b>	<b>Form Factor</b>
U01S12V	EMEA	1	Double Conversion	2U
U02S12V	EMEA	2	Double Conversion	2U
U03S12V	EMEA	3	Double Conversion	2U
U01S12L	EMEA	1	Double Conversion	2U
U02S12L	EMEA	2	Double Conversion	2U
U03S12L	EMEA	3	Double Conversion	2U
U01N12V	EMEA	1	Double Conversion	2U
U02N12V	EMEA	2	Double Conversion	2U
U03N12V	EMEA	3	Double Conversion	2U
U01N12L	EMEA	1	Double Conversion	2U
U02N12L	EMEA	2	Double Conversion	2U
U03N12L	EMEA	3	Double Conversion	2U

Battery Type	Full-Load Run Time (min)	Nominal Input Voltage	Nominal Output Voltage	Outlets
VRLA	6	220V/230V/240V	220V/230V/240V	(8)C13
VRLA	2.9	220V/230V/240V	220V/230V/240V	(8)C13
VRLA	3.4	220V/230V/240V	220V/230V/240V	(8)C13 + (1)C19
Lithium-Ion	9	220V/230V/240V	220V/230V/240V	(8)C13
Lithium-Ion	9	220V/230V/240V	220V/230V/240V	(8)C13
Lithium-Ion	9	220V/230V/240V	220V/230V/240V	(8)C13 + (1)C19
VRLA	6	220V/230V/240V	220V/230V/240V	(8)C13
VRLA	2.9	220V/230V/240V	220V/230V/240V	(8)C13
VRLA	3.4	220V/230V/240V	220V/230V/240V	(8)C13 + (1)C19
Lithium-Ion	9	220V/230V/240V	220V/230V/240V	(8)C13
Lithium-Ion	9	220V/230V/240V	220V/230V/240V	(8)C13
Lithium-Ion	9	220V/230V/240V	220V/230V/240V	(8)C13 + (1)C19



INTERNATIONAL  
**6-20 kVA UPS**

<b>Panduit SKU</b>	<b>Region Compliance</b>	<b>kVA</b>	<b>UPS Topology</b>	<b>Form Factor</b>
U06S12V	EMEA	6	Double Conversion	6U
U10S12V	EMEA	10	Double Conversion	6U
U10S32V	EMEA	10	Double Conversion	7U
U15S32V	EMEA	15	Double Conversion	7U
U20S32V	EMEA	20	Double Conversion	7U
U06N12V	EMEA	6	Double Conversion	6U
U10N12V	EMEA	10	Double Conversion	6U
U10N32V	EMEA	10	Double Conversion	7U
U15N32V	EMEA	15	Double Conversion	7U
U20N32V	EMEA	20	Double Conversion	7U

Battery Type	Full-Load Run Time (min)	Nominal Input Voltage	Nominal Output Voltage	Outlets
VRLA	9.7	220V/230V/240V	220V/230V/240V	(2)C13 + (2)C19, HW
VRLA	4.5	220V/230V/240V	220V/230V/240V	(2)C13 + (2)C19, HW
VRLA	11	380/400V	230/380/400V	HW (3P+N+PE) + (1P+N+PE)
VRLA	6.4	380/400V	230/380/400V	HW (3P+N+PE) + (1P+N+PE)
VRLA	4.1	380/400V	230/380/400V	HW (3P+N+PE) + (1P+N+PE)
VRLA	9.7	220V/230V/240V	220V/230V/240V	(2)C13 + (2)C19, HW
VRLA	4.5	220V/230V/240V	220V/230V/240V	(2)C13 + (2)C19, HW
VRLA	11	380/400V	230/380/400V	HW (3P+N+PE) + (1P+N+PE)
VRLA	6.4	380/400V	230/380/400V	HW (3P+N+PE) + (1P+N+PE)
VRLA	4.1	380/400V	230/380/400V	HW (3P+N+PE) + (1P+N+PE)

## Batteries and UPS Accessories

The accessories connect directly to the UPS Intelligent Network Management Card.

Part Number	Description
URC005	Relay Card (MiniAS400) (12V)
UMB20K	SmartZone™ PDU (Maintenance Bypass Switch) (17.3" × 25.98" × 5.1") (440mm × 660mm × 131mm) (15kg)
UNCP01	Panduit Intelligent Controller Network Card (iNMC)
UTOWFT	Tower Stabilizer Brackets



**URC005**



**UMB20K**



**UNCP01**



**UTOWFT**

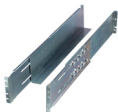
## Batteries and UPS Accessories (CONT'D)

<b>Part Number</b>	<b>Description</b>
URMKIT1	UPS Rack Mount Rail Kit for 1-3kVA UPS
URMKIT2	UPS Rack Mount Rail Kit for 5-20kVA UPS
URM480	Rack Mount Rail Kit for External Battery Pack 480V Chassis
EA001	Temperature Sensor
EC001	3 Temperature + Humidity Sensor
EF001	3 Sensor Hub
EB001	Temperature + Humidity Sensor
ED001	Rope Water Sensor
ACA01	Magnetic Door Sensor
EE001	Spot Water Sensor
ACC01	Dry Contact Sensor





**URMKIT1/URMKIT2**



**URM480**



**EA001**



**EC001**



**EF001**



**EB001**



**EE001**



**ED001**



**ACA01**



**ACC01**

# Battery Portfolio

Panduit SKU	Description
ULC024	24V LFP Lithium Replacement Battery cartridge
ULC048	48V LFP Lithium Replacement Battery cartridge
ULC272	72V 6Ah LFP Lithium Replacement Battery cartridge *2groups parallel connection
ULC372	72V 9Ah LFP Lithium Replacement Battery cartridge *3groups parallel connection
UVC024	24V Replacement VRLA battery cartridge for 1kVA UPS only
UVC036	36V Replacement VRLA battery cartridge for 1kVA UPS only
UVC048	48V Replacement VRLA battery cartridge for 2kVA UPS only
UVC072	72V Replacement VRLA battery cartridge for 3kVA UPS only
UVP024	External Battery Pack 2*2pcs 24V (9AH batteries) chassis & batteries included
UVP036	External Battery Pack 2*3pcs 36V (9AH batteries) chassis & batteries included
UVP048	External Battery Pack 2*4pcs 48V (9AH batteries) chassis & batteries included
UVP072	External Battery Pack 2*6pcs 72V (9AH batteries) chassis & batteries included
UVD024	24V Replacement VRLA battery cartridge set for 1kVA 24Vdc UPS EBP (2x 24V battery cartridges)
UVD036	36V Replacement VRLA battery cartridge set for 1kVA 36Vdc UPS EBP (2x 36V battery cartridges)
UVD048	48V Replacement VRLA battery cartridge set for 2kVA 48Vdc UPS EBP (2x 48V battery cartridges)
UVD072	72V Replacement VRLA battery cartridge set for 3kVA 72Vdc UPS EBP (2x 72V battery cartridges)
UVD240	240V Replacement VRLA battery cartridge set for 5-10kVA UPS EBP (2x 8-battery and 1x 4-battery cartridges)
UVD480	480V Replacement VRLA battery cartridge set for 3phase UPS EBP (4x battery cartridges)
UVP240	External Battery Pack 2*10pcs 240V (9AH batteries) chassis & batteries included
UVP480	External Battery Pack 4*10pcs 480V (9AH batteries) chassis & batteries included

## External Battery Packs:



**UVP024/UVP036/  
UVP048/UVP072**



**UVP240**

Form Factor	Use with this UPS SKU	kVA	Battery Voltage
NA	U01S12L U01N12L U01N11L U01S11L	1	24Vdc
NA	U02N11L U02S11L	1.5	48Vdc
NA	U02S12L U02N12L	2	72Vdc
NA	U03S12L U03N12L U03N11L U03S11L	3	72Vdc
NA	U01S13V U01N13V	1	24Vdc
NA	U01S12V U01S11V U01N12V U01N11V	1	36Vdc
NA	U02S12V U02S11V U02N12V U02N11V	2	48Vdc
NA	U03S12V U03S11V U03N12V U03N11V	3	72Vdc
2U	U01S13V U01N13V	1	24Vdc
2U	U01S12V U01S11V U01N12V U01N11V	1	36Vdc
2U	U02S12V U02S11V U02N12V U02N11V	2	48Vdc
2U	U03S12V U03S11V U03N12V U03N11V	3	72Vdc
NA	UVP024	1	24Vdc
NA	UVP036	1	36Vdc
NA	UVP048	2	48Vdc
NA	UVP072	3	72Vdc
NA	UVP240	5,6,10	240Vdc
NA	UVP480	10,15,20	480Vdc
3U	U06S12V U10S12V U05S11V U06S11V U10S11V U06N12V U06N12V U10N12V U05N11V U06N11V U10N11V	5,6,10	240Vdc
4U	U10N32V U15N32V U20N32V U10S32V U15S32V U20S32V	10,15,20	480Vdc



**UVP480**

Complete Warranty & Compliance information can be found at [www.panduit.com](http://www.panduit.com)  
Customer Service: [cs@panduit.com](mailto:cs@panduit.com) or 800.777.3300  
Technical Support: [techsupport@panduit.com](mailto:techsupport@panduit.com) or 866.405.6654

**PANDUIT™**

©2022 Panduit Corp. ALL  
RIGHTS RESERVED.  
PUCB28--SA-ENG 2/2022



Sales, Marketing, Technical and Channel  
representative of Panduit in Middle East & Africa.  
[info@itrident.com](mailto:info@itrident.com)  
[www.itrident.com](http://www.itrident.com)